

Model ECS 20

3" - 14 gauge spun aluminum ball
gold anodized.

Single sheave truck, cast aluminum
stationary, non-fouling type

One set of halyard,
#8 polypropylene

2 Nylon flag snaps

One 9" Cast Aluminum Cleat

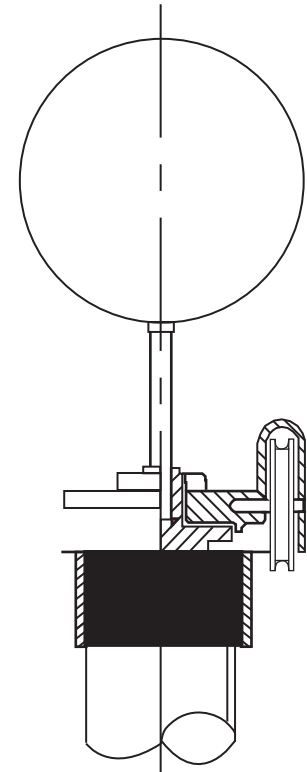
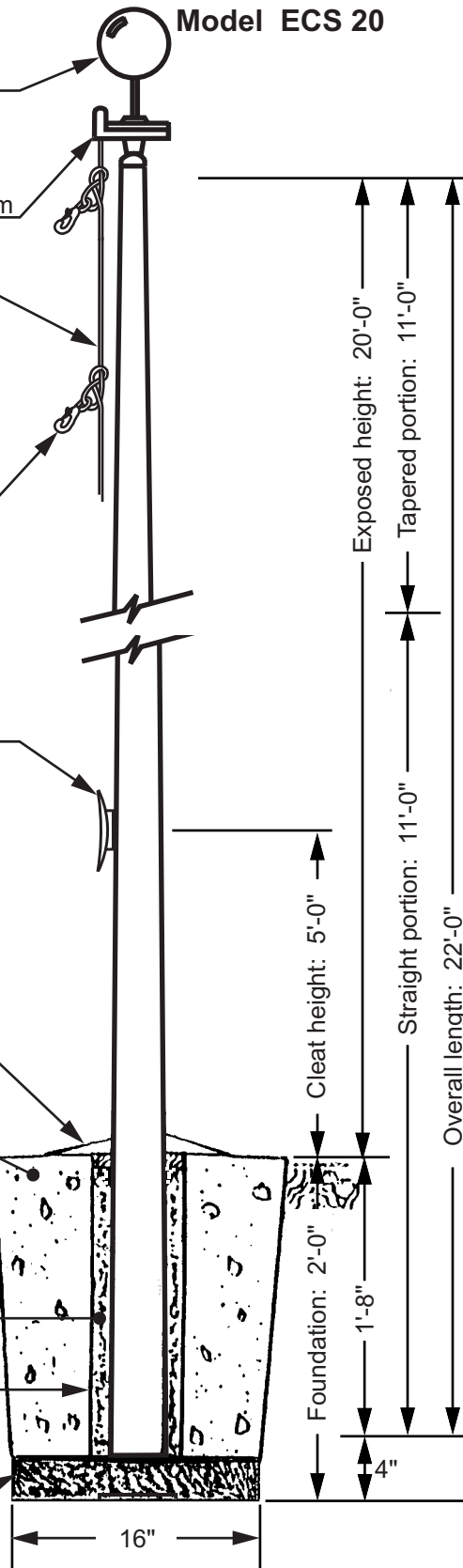
Aluminum flash collar (Optional)

3000 PSI concrete

Dry sand tightly tamped
after aligning pole

Plastic PVC Sono tube

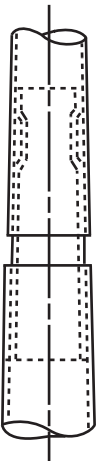
Crushed Stone



All shafts with overall
length of more than
38'-6" are shipped in
two sections.

Each section matched
marked for field assembly.
Exposed portion of jam
sleeve must be **well
lubricated** prior to
assembly.

1-1/2" maximum shop
gap allowed for field
fitting (ram for tight joint)



Filename: ECS 20 stationary truck_external halyard.ai

Project:	Ground set tapered aluminum flagpole: ALLOY: 6063T6	EDER FLAG	Date:
Location:	Exposed height: 20'-0"	Overall height: 22'-0"	Revision:
Architect:	Ship in 1 section	Butt diameter: 3-1/2"	
Contractor:	Top diameter: 2-3/8"	Wall thickness: .125"	
Customer:	Finish: 100 grit polish		Job: